



Evergreen Health 2022

✉ www.evergreenlifestyle.co.za
🌐 info@evergreenlifestyle.co.za





INDEX

1. Services

2. Network Partners

3. Questions and answers





SERVICES

Emergency Care

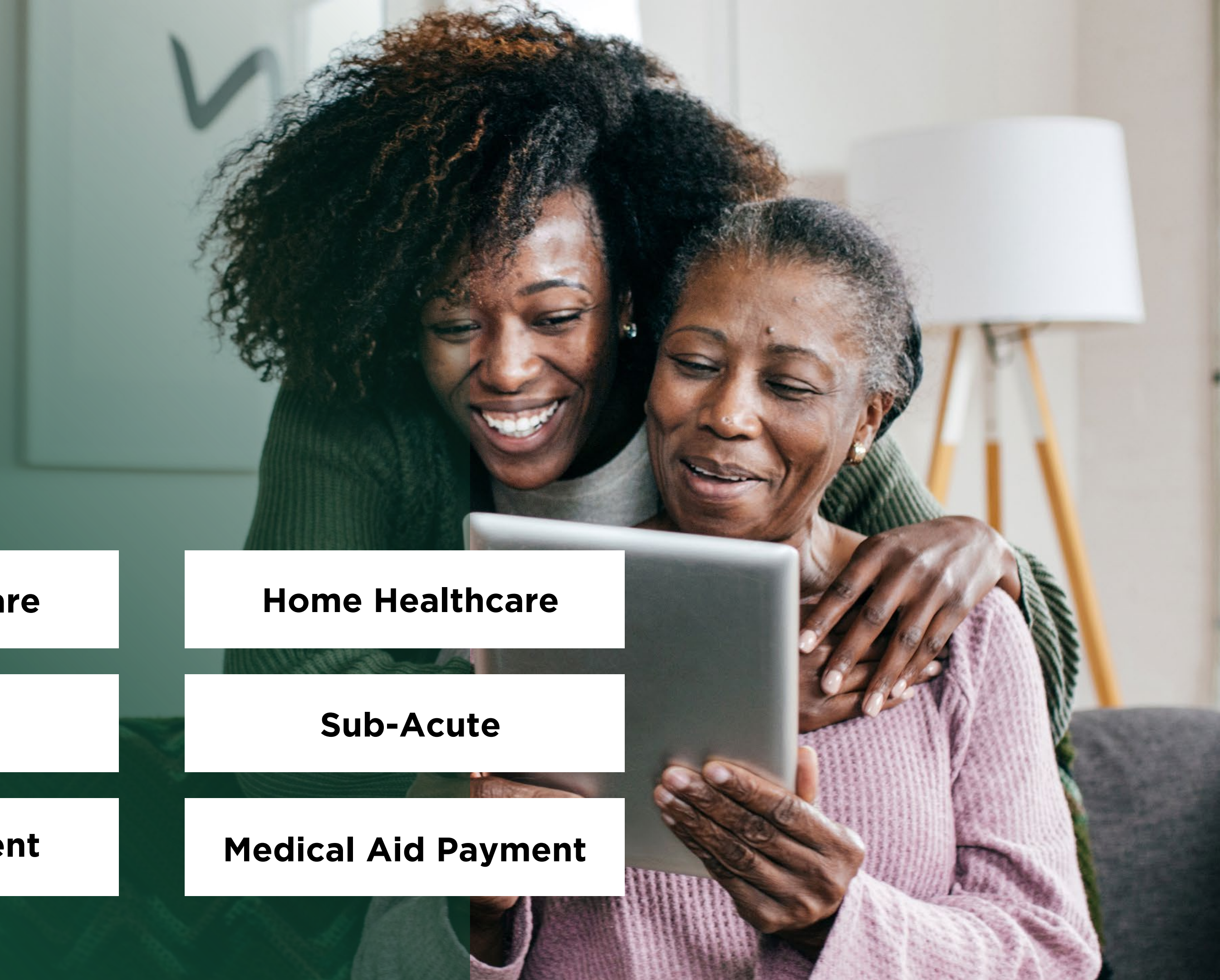
Frail Care

Private Payment

Home Healthcare

Sub-Acute

Medical Aid Payment



EMERGENCY CARE

♥ Telecare Panic call button

♥ Namola Call Button



HOME HEALTH CARE



The provision of health services in the home in order to promote, restore and maintain a person's maximum level of comfort, function and health including care towards a dignified death.







Homecare services can be classified into preventative, promotive, therapeutic, rehabilitative, long-term maintenance and palliative care categories.

HOME HEALTH CARE

- Placement of Care workers
- General Multi-Disciplinary Basic needs
- Respiratory Multi-Disciplinary Breathing disorders
- Medication Administration/IV Infusion
- Medical Procedures
- Palliative Care
- Medical Equipment Rental / Medical Consumables
- Multi-Disciplinary Team

DETERMINING THE NEED FOR CARE

1ST STEP

-  Contact Evergreen Health Clinic
-  Registered Nurse Assessment
-  Checklist of care needed
-  Individual Care Plan according to needs



ADVANTAGES IN USING EVERGREEN HEALTH CARE WORKERS



- ♥ Professional Personalized Service
- ♥ Care Coordination and oversight
- ♥ Care Workers are Screened and insured
- ♥ Back up Multi-Disciplinary Emergency plan
- ♥ Expertise - Regular Training
- ♥ Availability of potential options

DISADVANTAGES IN USING PRIVATE CARE WORKERS

- ♥ Level of professionalism
- ♥ Liability
- ♥ Burden of responsibility
- ♥ Background check missing
- ♥ Lack of experience
- ♥ Leave and sick leave replacement
- ♥ Level of experience (Transferring/Mobility)





MEDICAL PROCEDURES

- ♥ Always performed by a Registered Nurse
- ♥ Simple and advanced wound care
- ♥ Medication Administration
- ♥ Oxygen administration/ Nebulizing
- ♥ Palliative Care

MULTI-DISCIPLINARY SERVICES

- ♥ Physiotherapy
- ♥ Occupational Therapy
- ♥ Dietician
- ♥ Speech Therapist
- ♥ Social Worker
- ♥ Counsellor



PAYMENT FOR CARE

*Know your medical aid benefit /
coverage and limits of plan*

Private payment:

- Medical aids do not cover personal basic care

Medical Aid Coverage:

- Medical Intervention
- Post Hospitalization Care
- Multi-Disciplinary Services





FRAIL CARE

WHAT YOU SHOULD KNOW

- ♥ The care you need when you are unable to perform activities of daily living, such as eating, personal hygiene and moving about without assistance,
- ♥ When you are no longer able to look after yourself because of frailty or mental incapacity, you are unlikely to return to independent living.
- ♥ All Evergreen Health Frail Care Facilities are registered and licensed with Dept. Social Development under the Older Persons Act.

PAYING FOR FRAIL CARE

- ♥ Open Medical Scheme or any kind of assisted living, is considered by the medical aid scheme as a social welfare responsibility and cover of your long-term accommodation in a Frail Care is rare.
- ♥ Restricted Medical Schemes may consider paying by making a contribution towards Frail Care, this benefit needs to be motivated, and would be assessed by a medical advisor.
- ♥ Chronic medication, visits by a GP OR Multidisciplinary Team Member, as well as the cost of various appliances, may still be paid by the scheme in line with benefits.

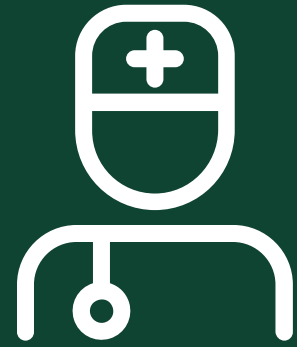
ADMISSION REQUIREMENTS INTO EVERGREEN CARE CENTERS

Doctors Motivation letter or Registered Nurse
Assessment determining;

- 📄 Diagnosis
- 📄 Medication
- 📄 Services needed
- 📄 Dr's Orders and motivation
- 📄 Correct staff planning according to diagnosis and needs
- 📄 Agreement and consent signed



FRAIL CARE SERVICES



Residents
Doctor



24-hour Professional and
non-professional nursing



Medical Equipment
and consumables



Short Term or
Long term stay



Dietician



Social Worker



Physiotherapist



Occupational
Therapist



Daily Activities



Psychotherapist

SUB-ACUTE CARE

WHERE RECOVERY BEGINS

- ♥ After suffering an acute event as a result of an illness, injury or disease, have a determined course of treatment, and who do not recover intensive diagnostic and/or invasive medical procedures.
- ♥ The focus is on patients with complex medical needs or those in need of rehabilitative care and treatment.
- ♥ The three important role players within a Sub-Acute facility are the patient, their families and the multi-disciplinary healthcare teams



MUIZENBERG SUB-ACUTE FACILITY



Licensed through the Dept of Health in terms of the Healthcare Act. and The Board of Healthcare Funders



Muizenberg has a practice Code Number



Sub-Acute Services must be pre-Authorized, and mostly claimed from medical aid funders, in line with benefits from the medical scheme.



The length of stay in sub-acute would depend on patients' circumstances and diagnosis.

SUB-ACUTE CARE SERVICES

- ♥ Recuperative Care- Multi-Disciplinary therapy and support strength and Functioning to regain mobility assisting patients to manage new or changing health conditions.
- ♥ Specialized Care-Healthcare professionals provide medical care, such as wound management, pain management, respiratory care and other services
- ♥ Post-Operative Care



COMMON CONDITIONS OF PEOPLE RECEIVING POST-OPERATIVE CARE INCLUDE:

- Orthopedic Conditions, e.g., hip, knee fractures or replacements;
- After major surgery;
- Severe motor vehicle accident injuries;
- Cardiac conditions heart attacks, congestive heart failure;
- Neurological conditions e.g., stroke, head trauma and other forms of brain and spinal cord injuries;
- Respiratory Condition- needing pulmonary management e.g., ventilation Care
- Complications of chronic disease e.g. amputations;
- Deconditioning related to a fall;
- Specialized Care e.g. Wound Care;
- End of life and palliative care;

*How long do patients stay at a Sub-Acute Facility?
Few days, weeks or months.*



EVERGREEN HEALTH NETWORKS



HECTOR, NAIDOO & ASSOCIATES
REGISTERED PHYSIOTHERAPISTS

MEDICLINIC 
EXPERTISE YOU CAN TRUST.



Discovery
Health

Ecomed
Medical (Pty) Ltd



HARTMANN 
Going further
for health


BIOCLIN
SOLUTIONS



B·H·F
SOUTHERN AFRICA

arjo
with people in mind



| Transpharm



THANK YOU!
ANY QUESTIONS?